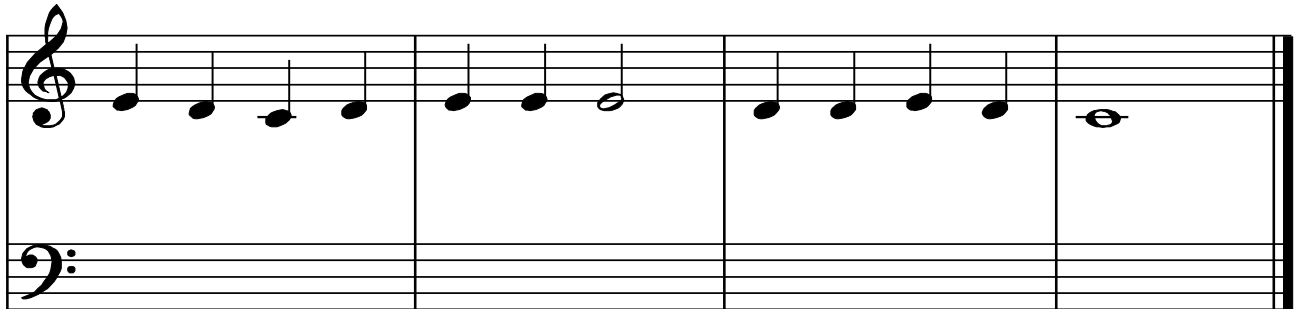


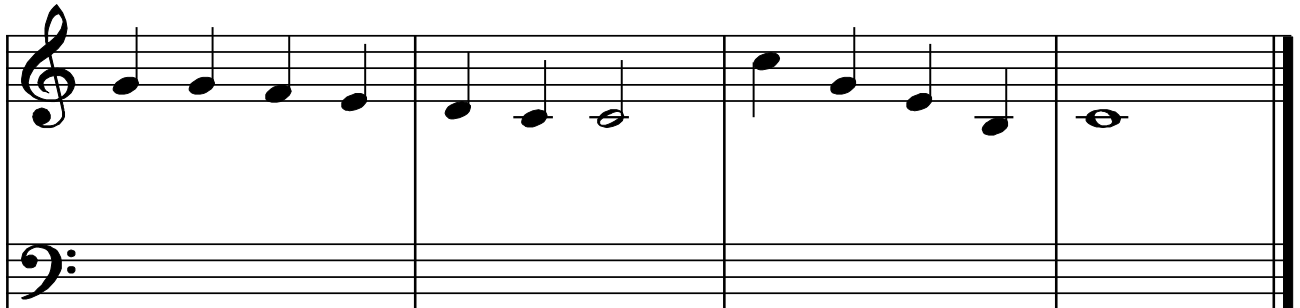
# Homework 1 : Transposition

1. Rewrite the following passage **one octave lower** on the bass clef.



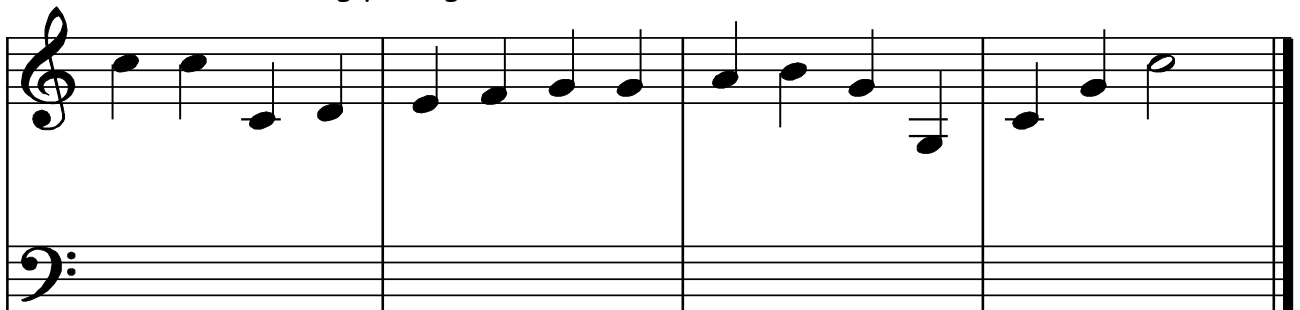
A musical staff with a treble clef and a bass clef. The treble clef staff contains a melody of eighth and quarter notes, starting on G4 and ending on G4. The bass clef staff is empty.

2. Rewrite the following passage **one octave lower** on the bass clef



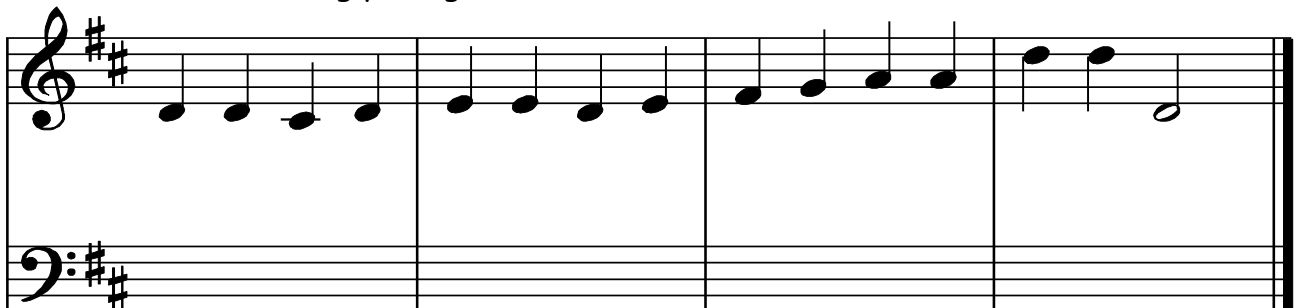
A musical staff with a treble clef and a bass clef. The treble clef staff contains a melody of eighth and quarter notes, starting on G4 and ending on G4. The bass clef staff is empty.

3. Rewrite the following passage **one octave lower** on the bass clef



A musical staff with a treble clef and a bass clef. The treble clef staff contains a melody of eighth and quarter notes, starting on G4 and ending on G4. The bass clef staff is empty.

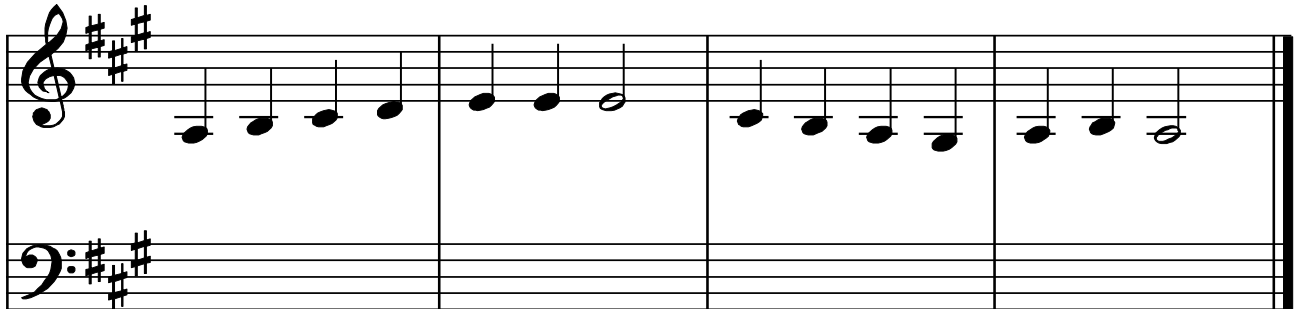
4. Rewrite the following passage **one octave lower** on the bass clef.



A musical staff with a treble clef and a bass clef. The treble clef staff contains a melody of eighth and quarter notes, starting on G4 and ending on G4. The bass clef staff is empty.

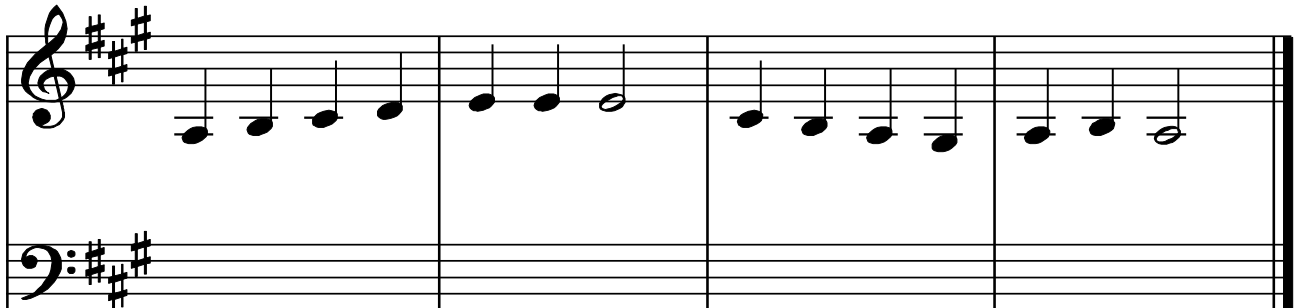
# Homework 1 : Transposition

5. Rewrite the following passage **one octave lower** on the bass clef



Exercise 5 shows a musical passage in treble clef with a key signature of three sharps (F#, C#, G#). The passage consists of four measures: Measure 1 has four quarter notes (F4, C5, G5, F5); Measure 2 has three quarter notes (C5, G5, F5) and a half note (F5); Measure 3 has four quarter notes (F5, C5, G5, F5); Measure 4 has three quarter notes (C5, G5, F5) and a half note (F5). The bass clef staff is empty for the student to transcribe the passage one octave lower.

6. Rewrite the following passage **at the same pitch** on the bass clef.



Exercise 6 shows a musical passage in treble clef with a key signature of three sharps (F#, C#, G#). The passage consists of four measures: Measure 1 has four quarter notes (F4, C5, G5, F5); Measure 2 has three quarter notes (C5, G5, F5) and a half note (F5); Measure 3 has four quarter notes (F5, C5, G5, F5); Measure 4 has three quarter notes (C5, G5, F5) and a half note (F5). The bass clef staff is empty for the student to transcribe the passage at the same pitch.

7. Rewrite the following passage **at the same pitch** on the bass clef.



Exercise 7 shows a musical passage in treble clef with a key signature of one flat (Bb). The passage consists of four measures: Measure 1 has four quarter notes (Bb4, C5, D5, Bb4); Measure 2 has four quarter notes (C5, D5, E5, C5) with a slur over the first three; Measure 3 has four quarter notes (Bb4, C5, D5, Bb4); Measure 4 has three quarter notes (C5, Bb4, C5) and a half note (Bb4). The bass clef staff is empty for the student to transcribe the passage at the same pitch.

8. Rewrite the following passage **at the same pitch** on the bass clef.



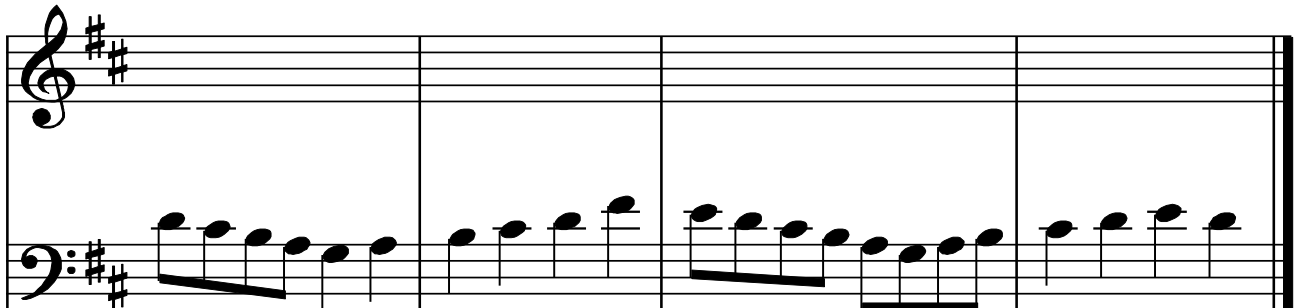
Exercise 8 shows a musical passage in treble clef with a key signature of one flat (Bb). The passage consists of four measures: Measure 1 has four quarter notes (Bb4, C5, D5, Bb4); Measure 2 has three quarter notes (C5, D5, Bb4) and a half note (Bb4); Measure 3 has four quarter notes (Bb4, C5, D5, Bb4); Measure 4 has three quarter notes (C5, Bb4, C5) and a half note (Bb4). The bass clef staff is empty for the student to transcribe the passage at the same pitch.

# Homework 1 : Transposition

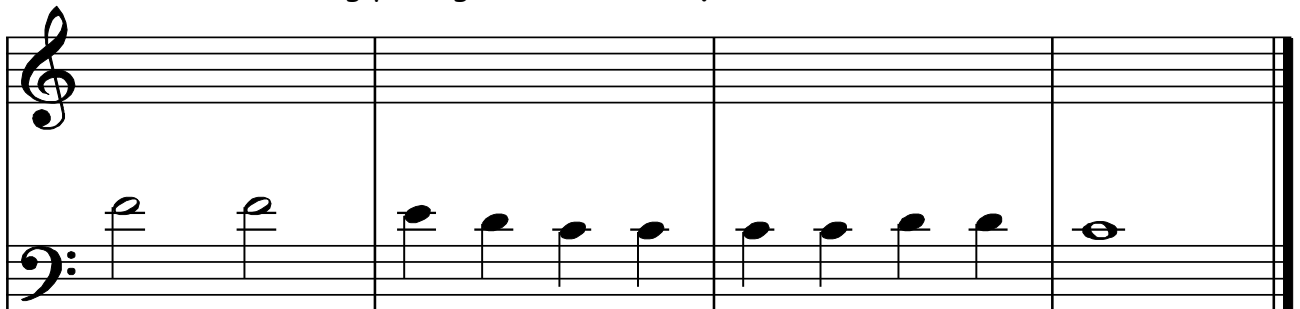
9. Rewrite the following passage **at the same pitch** on the treble clef.



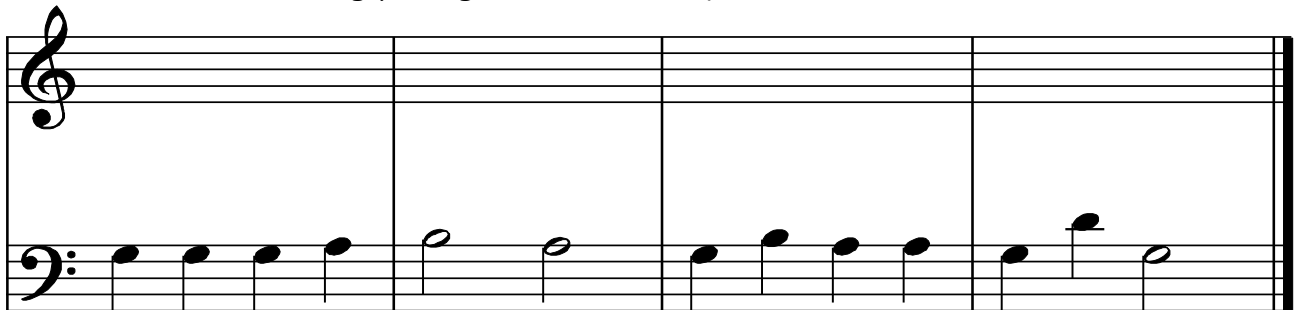
10. Rewrite the following passage **at the same pitch** on the treble clef.



11. Rewrite the following passage **at the same pitch** on the treble clef.

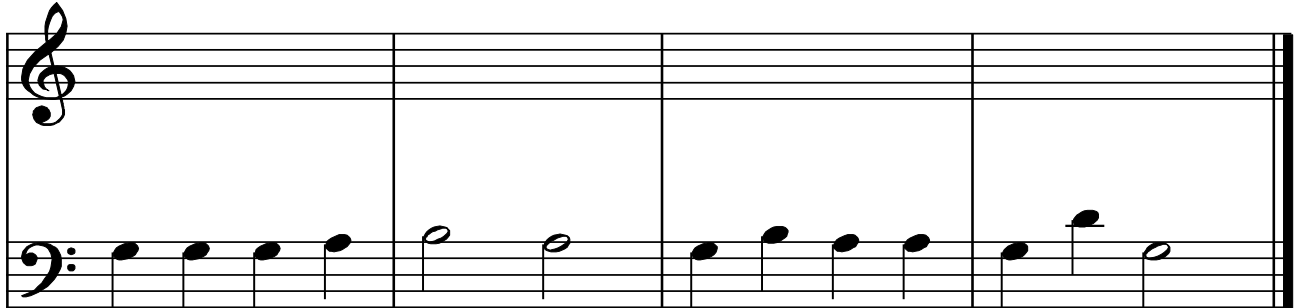


12. Rewrite the following passage **at the same pitch** on the treble clef.

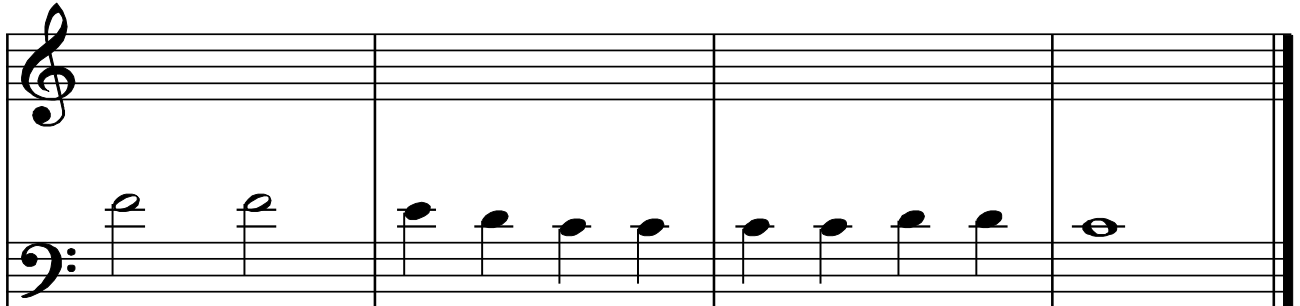


## Homework 1 : Transposition

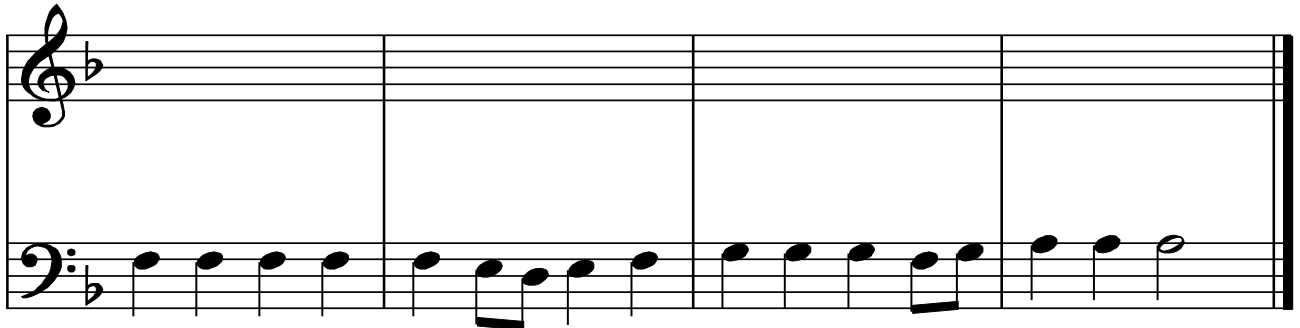
13. Rewrite the following passage **one octave higher** on the treble clef.



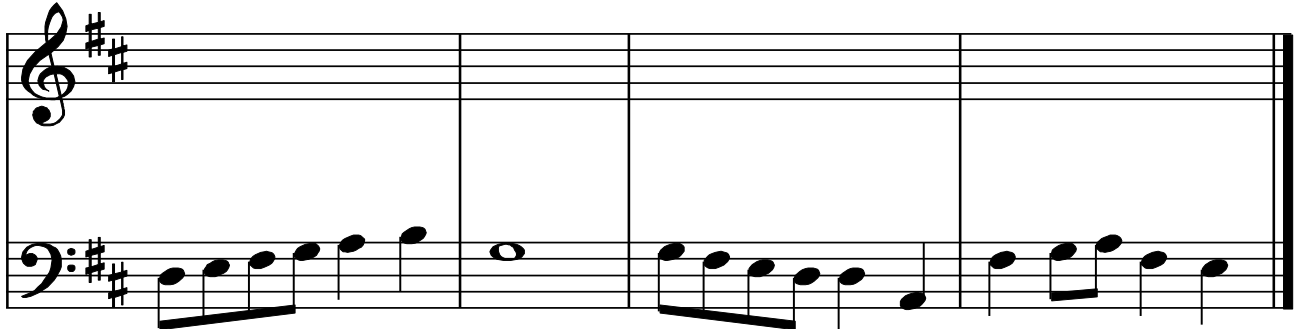
14. Rewrite the following passage **one octave higher** on the treble clef.



15. Rewrite the following passage **one octave higher** on the treble clef.

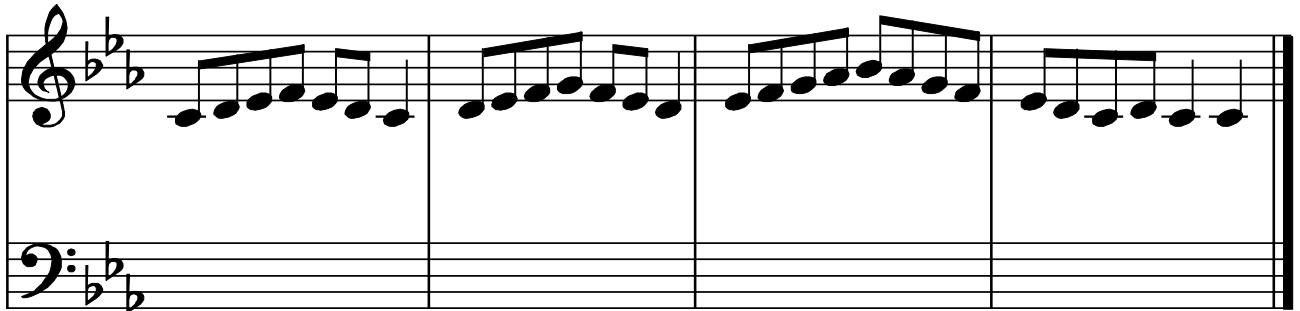


16. Rewrite the following passage **one octave higher** on the treble clef.



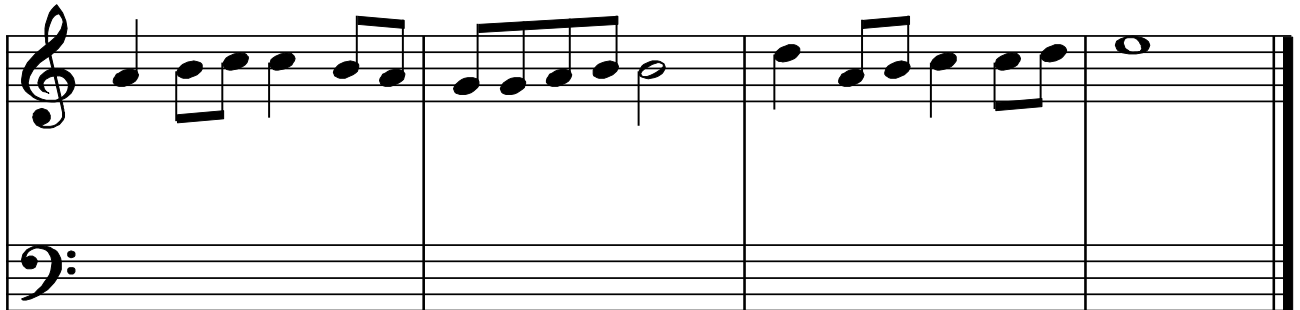
# Homework 1 : Transposition

17. Rewrite the following passage **one octave lower** on the bass clef.



Exercise 17 shows a musical passage in treble clef with a key signature of two flats (B-flat and E-flat). The passage consists of four measures of eighth-note runs. The first measure starts on G4, the second on A4, the third on B4, and the fourth on C5. The bass clef staff is empty for the student to transcribe the passage one octave lower.

18. Rewrite the following passage **one octave lower** on the bass clef.



Exercise 18 shows a musical passage in treble clef with a key signature of two flats (B-flat and E-flat). The passage consists of four measures of eighth-note runs. The first measure starts on G4, the second on A4, the third on B4, and the fourth on C5. The bass clef staff is empty for the student to transcribe the passage one octave lower.

19. Rewrite the following passage **one octave lower** on the bass clef.



Exercise 19 shows a musical passage in treble clef with a key signature of one sharp (F-sharp). The passage consists of four measures of eighth-note runs. The first measure starts on G4, the second on A4, the third on B4, and the fourth on C5. The bass clef staff is empty for the student to transcribe the passage one octave lower.

20. Rewrite the following passage **at the same pitch** on the bass clef.



Exercise 20 shows a musical passage in treble clef with a key signature of two sharps (F-sharp and C-sharp). The passage consists of four measures of eighth-note runs. The first measure starts on G4, the second on A4, the third on B4, and the fourth on C5. The bass clef staff is empty for the student to transcribe the passage at the same pitch.