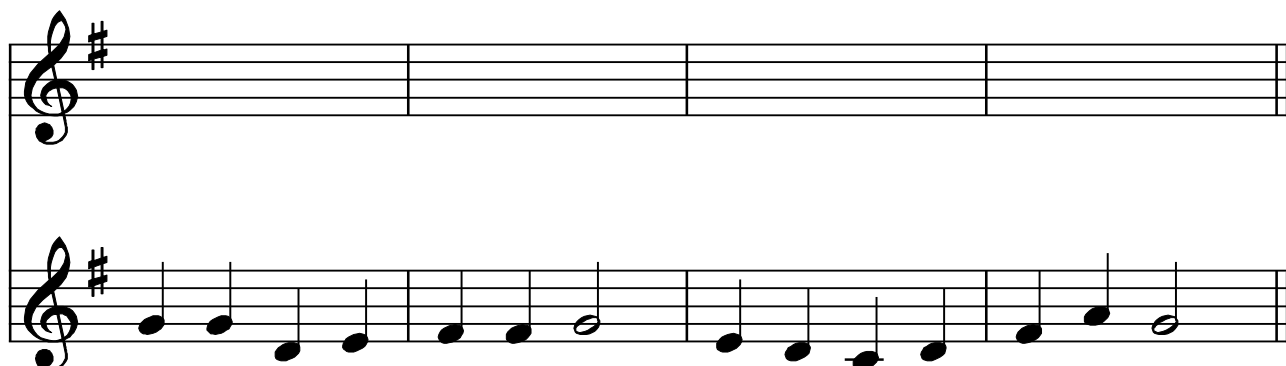


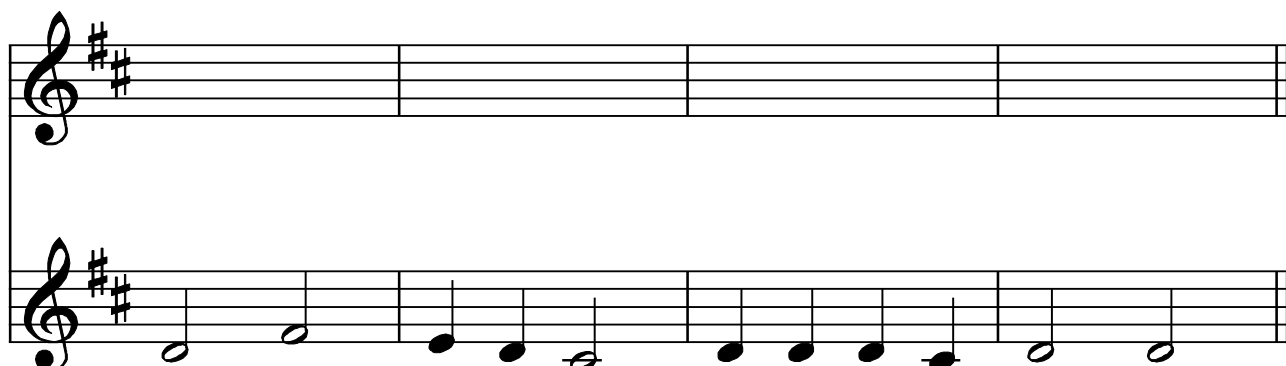
# Higher Literacy : Revision Sheet 1

Name \_\_\_\_\_

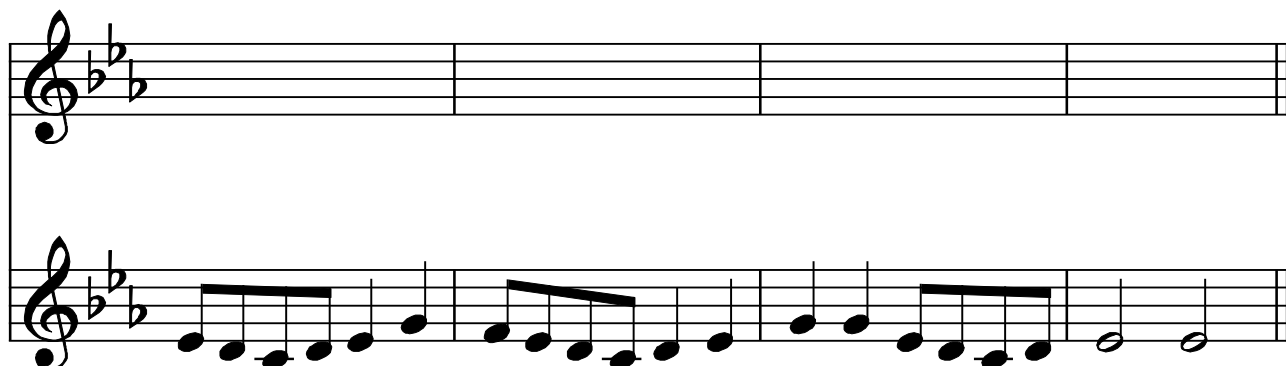
1. Transpose the following up one octave on the treble clef.



2. Transpose the following up one octave on the treble clef.



3. Transpose the following up one octave on the treble clef.



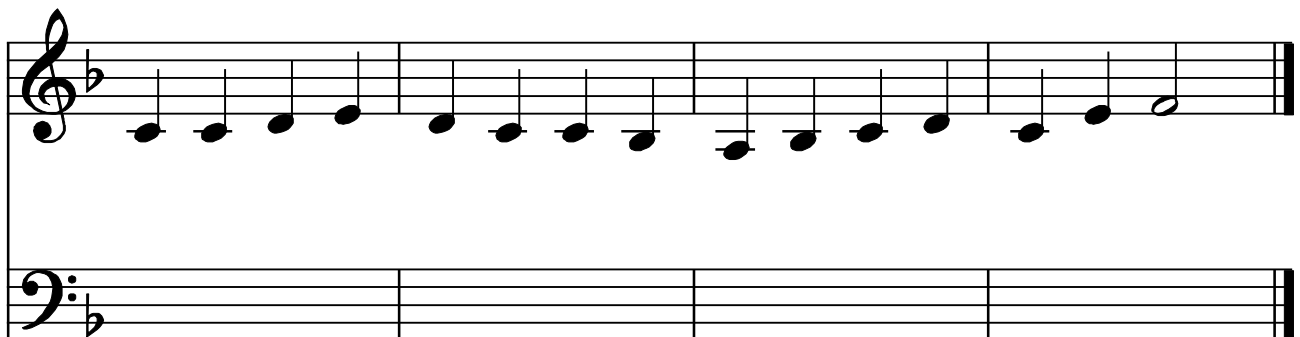
4. Rewrite the following phrase at the same pitch on the bass clef.



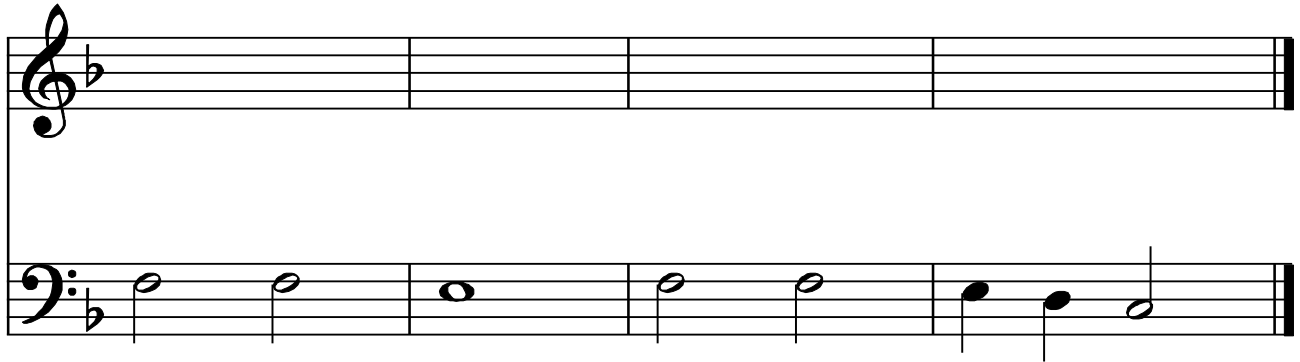
5. Rewrite the following phrase at the same pitch on the bass clef.



6. Rewrite the following phrase at the same pitch on the bass clef.



7. Transpose the following up one octave from the bass clef to the treble clef.



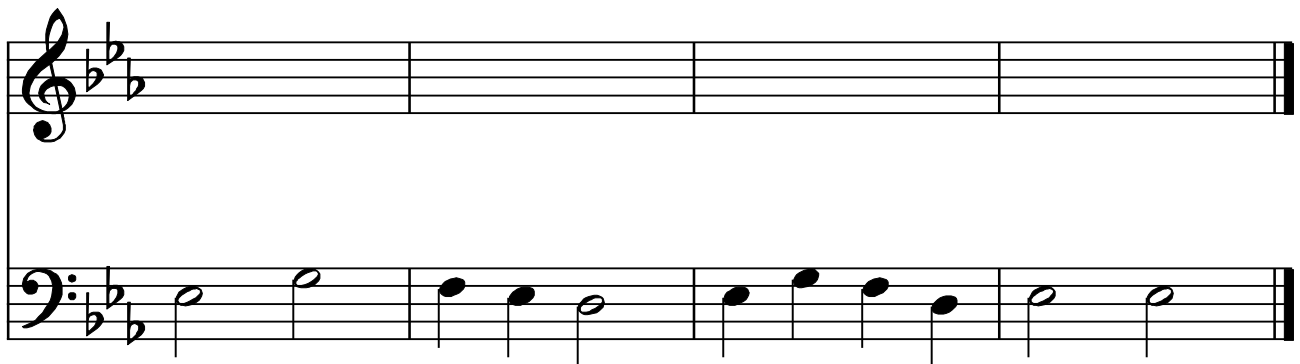
Musical notation for exercise 7. The top staff is a treble clef with a key signature of one flat (B-flat). The bottom staff is a bass clef with a key signature of one flat (B-flat). The melody in the bass clef consists of the following notes: G2 (half note), F2 (half note), E2 (whole note), D2 (half note), C2 (half note), B1 (half note), A1 (half note), and G1 (half note).

8. Transpose the following up one octave from the bass clef to the treble clef.



Musical notation for exercise 8. The top staff is a treble clef with a key signature of one flat (B-flat). The bottom staff is a bass clef with a key signature of one flat (B-flat). The melody in the bass clef consists of the following notes: G2 (half note), F2 (half note), E2 (half note), D2 (half note), C2 (half note), B1 (half note), A1 (half note), and G1 (half note).

9. Transpose the following up one octave from the bass clef to the treble clef.



Musical notation for exercise 9. The top staff is a treble clef with a key signature of two flats (B-flat and E-flat). The bottom staff is a bass clef with a key signature of two flats (B-flat and E-flat). The melody in the bass clef consists of the following notes: G2 (half note), F2 (half note), E2 (half note), D2 (half note), C2 (half note), B1 (half note), A1 (half note), and G1 (half note).

10. Transpose the following down one octave from the treble clef to the bass clef.



Exercise 10 shows a musical staff with a treble clef and a key signature of two sharps (F# and C#). The melody consists of the following notes: D4, E4, F#4, G4, A4, B4, C#5, B4, A4, G4, F#4, E4, D4. The bass staff is empty, with a bass clef and the same key signature, for transposition.

11. Transpose the following down one octave from the treble clef to the bass clef.



Exercise 11 shows a musical staff with a treble clef and a key signature of two flats (Bb and Eb). The melody consists of the following notes: Bb3, Bb3, Cb4, Db4, Eb4, Eb4, Fb4, Gb4, Ab4. The bass staff is empty, with a bass clef and the same key signature, for transposition.

12. Transpose the following down one octave from the treble clef to the bass clef.



Exercise 12 shows a musical staff with a treble clef and a key signature of one sharp (F#). The melody consists of the following notes: D4, E4, F#4, G4, A4, B4, C#5, B4, A4, G4, F#4, E4, D4. The bass staff is empty, with a bass clef and the same key signature, for transposition.